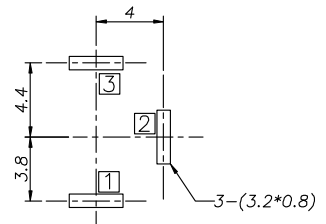
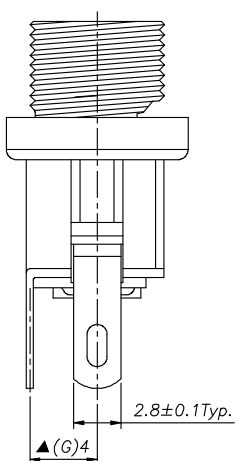
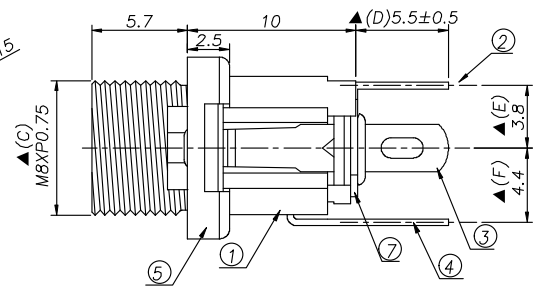
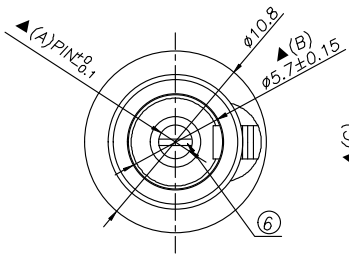
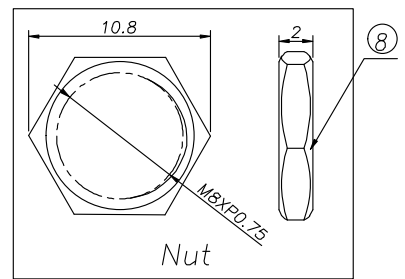


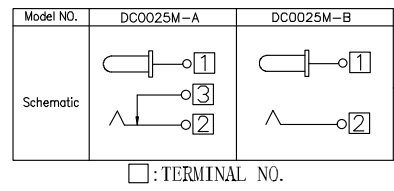
BSUN	1	2	3	4	5	6	7	
					REV. I.TE.	DESCRIPTION	SIGN	DATE



RECOMMENDED P. C. B. LAYOUT  
UNSPECIFIED TOLERANCE:  $\pm 0.05$   
(TOP VIEW)



Model No.	DC-025M- <u>H</u>	DC-025M- <u>I</u>
PIN	$\phi 2.0$	$\phi 2.5$

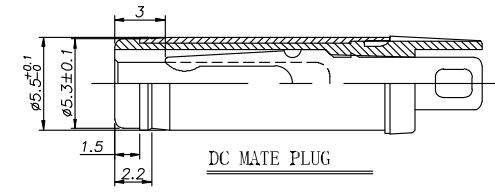


Ordering information:

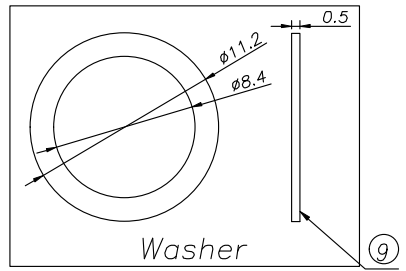
DC-025M-      PB 0A C 0 4

(1) (2) (3) (4) (5) (6) (7) (8)

- (1): Series No
- (2): Schematic option: A B
- (3): Center pin diameter: H=2.0 I=2.35 J=2.5
- (4): Material of housing: PB=PBT
- (5): Housing color:
  - 0A=Black
  - S=Silver (Ag)
  - T=Tin (Sn)
  - C=copper&tin alloy plating (Standard)
- (6): Terminal plating
  - 0=No special option
- (7): Special option
- (8): Packing mode:
  - 4=Bag packing



- Specification:
- Rating : DC 30V 3A.
  - Contact resistance:  $\leq 30m\Omega$ .  
After test:  $\leq 50m\Omega$
  - Insulation resistance:  $\geq 100M\Omega$  (500VDC).  
After test:  $\geq 50M\Omega$
  - Withstanding voltage: 500VAC.
  - Insertion and extraction force: 3N~30N.
  - life test: 5000cycles min.
  - Operation temperature range:  $-20^{\circ}\text{C} \sim 70^{\circ}\text{C}$ .
  - Preservative temperature range:  $-40^{\circ}\text{C} \sim 85^{\circ}\text{C}$ .
  - Sign "▲" is importance dimension.



⑨	Washer-2	1	Spcc	Nickel plating
⑧	Nut	1	Brass	Nickel plating
⑦	Washer-1	2	Bakelite	
⑥	Pin	1	Bronze	Nickel plating
⑤	Bushing	1	Brass	Nickel plating
④	Shunt Terminal	③	Brass	Copper&tin plating
③	Tip Spring	②	Phosphor bronze	Copper&tin plating
②	Center pin terminal	①	Brass	Copper&tin plating
①	Housing	1	PBT	Black
NO.	DESCRIPTION	QTY	MATERIAL	REMARK

UNIT:MM	TYPE:	MODEL NO:	PAPER NO: A4	PAGE 1 OF 1
	DC POWER JACK	DC-025M	TOLERANCE	ANGLES
			$\pm 0.3$	$\pm 2^{\circ}$
			SCALE	VER
			N/A	2

DESIGNER BY: Allen Xiao 2011.08.30  
CHECK BY:  
APPROVED BY:

东莞市朗顿电子科技有限公司