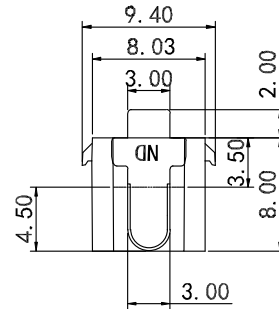
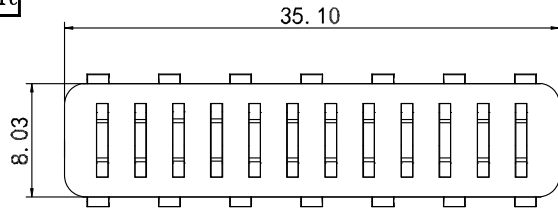


RoHS
Compliant

SYMBOL	REVISION	APPROVAL	DATE



NOTE:

Material

Insulator: LCP

Contact: C2680

Contact Plated: Gold over Nickel or Tin

Specification

Current Rating: 12A

Instant Current: 15A

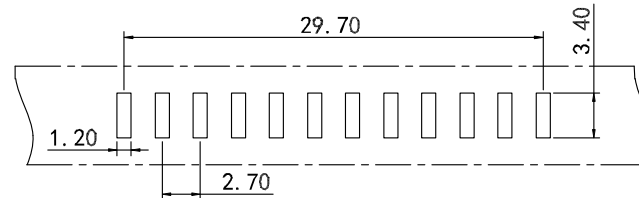
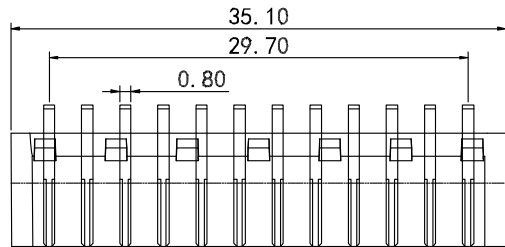
Rated Voltage: 12V

Contact Resistance: 30mΩ

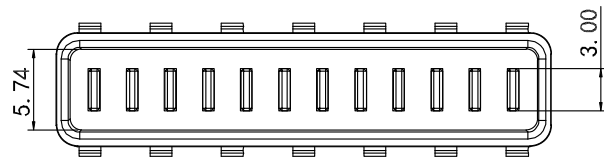
Insulation Resistance: 100MΩ

Dielectric Voltage: 500V

Operating Temperature: -40° ~105°



RECOMMENDED PCB LAYOUT
T=0.65MM, TOLERANCES ±0.05MM



2	HOUSING	LCP	1	GRAY
1	CONTACT TERMINAL	C2680	12	Au PLATED
NO.	PARTS	MATERIAL	QTY.	FINISHING

东莞市朗顿电子科技有限公司

COPYRIGHT RESERVED, PLEASE DO NOT COPY.

PART NAME		CONNECTOR		DRAWING	Y. C. Zhang	DWG. No.	
PART NO.		LD-B31M-12P-R1		CHECK	G. C. Chen	REV.	A1
UNIT:	TOLERANCE	UP TO 5	±0.2	APPROVAL		DATE	24-11-2020
	OTHERWISE	ABOVE 5 ~30	±0.3			SCALE	2:1
mm		ABOVE 30	±0.5				
		ANGLE	0° ±3°				