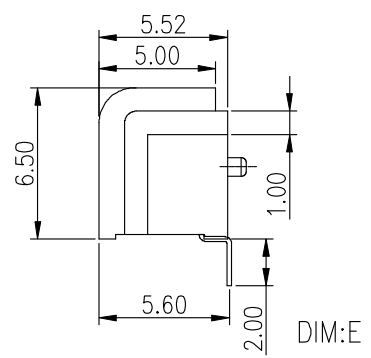
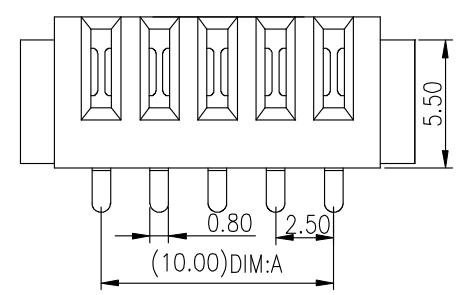
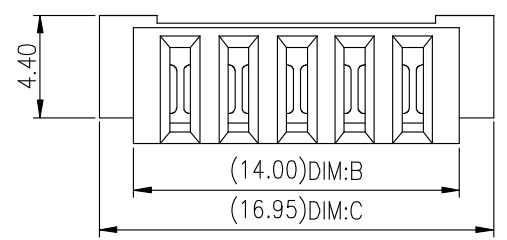
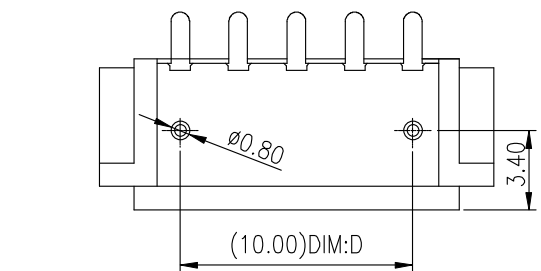


REV.	DESCRIPTION	DRAW.	DATE.



No:of pins	Dimension				
	DIM.A	DIM.B	DIM.C	DIM.D	DIM.E
03	5.00	9.00	11.95	5.00	2.00
04	7.50	11.50	14.45	7.50	2.00
05	10.00	14.00	16.95	10.00	2.00
06	12.50	16.50	19.45	12.50	2.00
07	15.00	19.00	21.95	15.00	2.00
08	17.50	21.50	24.45	17.50	2.00
09	20.00	24.00	26.95	20.00	2.00
10	22.50	26.50	29.45	22.50	2.00
11	25.00	29.00	31.95	25.00	2.00

Material

Insulator:Nylon 9T(UL94V-0)

Contact:phosphor Bronze

Contact Plated:Gold over Nickel or Tin

Specification

Current rating:7A

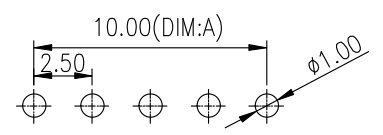
instant CURRENT:10A

Contact Resistance:30M Ω

Insulation Resistance:100M Ω

Dielectric Voltage:500V

Operdting Temperature:-40°~105°



Recommended P.C.B Layout
Layout Tolerance=+/-0.05mm

东莞市朗顿电子科技有限公司

UNLESS OTHERWISE SPECIFIED,TOLERANCE:
X. ±0.20
X.x ±0.15
X.xx ±0.10
ANGULAR ±2°

DESIGN	Y.Q.H	DATE	2014.08.26	TITLE: Battery 180° 2.5mm Pitches Female Connector	
APPROVED		DATE		SCALE: 1:1	UNIT: mm
PART NO	LD-B04F-A-SMT	REV: 01		SHEET: 1/1	
DRAWING NO	LD-B04F-A-SMT	SIZE: A4			