

F

E

D

C

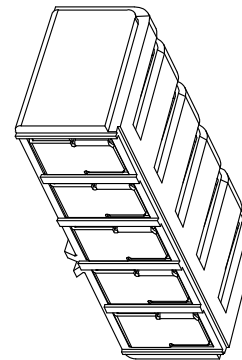
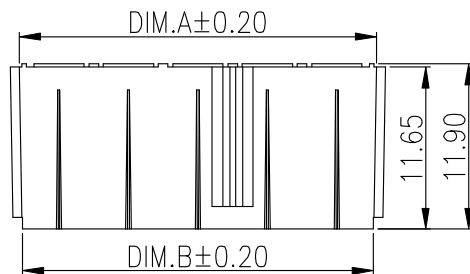
B

A

RoHS
Compliant

SYMBOL	REVISION	APPROVAL	DATE

1



备注:

1. 产品规格:

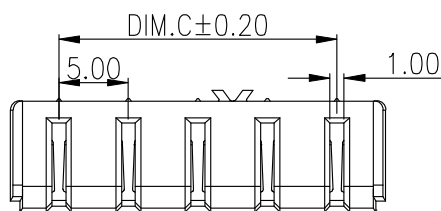
- 1-1. 额定电压:30V
- 1-2. 耐电压:1000V AC MIN.
- 1-3. 接触阻抗:30mΩ MAX. INITIAL; 40mΩ MAX AFTER 3000 CYCLES
- 1-4. 绝缘电阻:1000MΩ MIN
- 1-5. 工作温度:-25°C TO +80°C

2. 材质:

- 2.1胶芯: PA9T UL94V-0/LCP BLACK
- 2.2端子: 合金铜, 镍底, GOLD

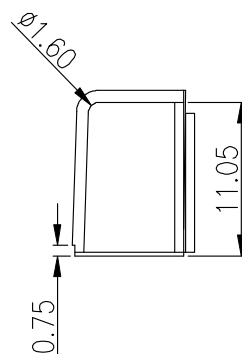
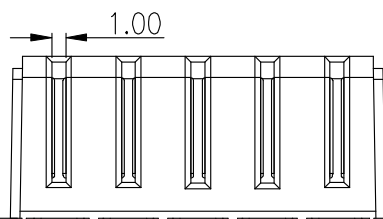
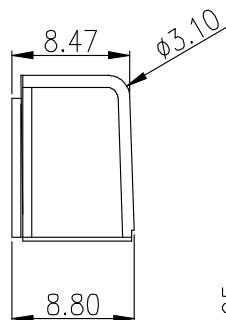
3. 所用材质须符合RoHS要求

2

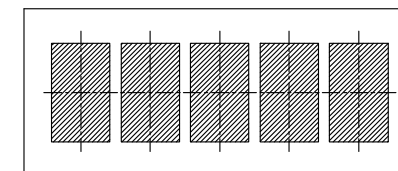
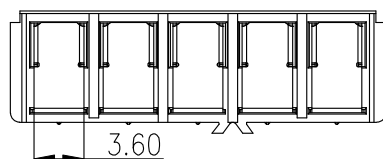


PART NUMBER	PIN	Dim.A	Dim.B	Dim.C
母座LD-C01F-A-2P-SMT	02pin	10.70	10.20	5.00
母座LD-C01F-A-3P-SMT	03pin	15.70	15.20	10.00
母座LD-C01F-A-4P-SMT	04pin	20.70	20.20	15.00
母座LD-C01F-A-5P-SMT	05pin	25.70	25.20	20.00

3



4



RECOMMENDED P.C. BOARD LAYOUT

东莞市朗顿电子科技有限公司

COPYRIGHT RESERVED, PLEASE DO NOT COPY.

PART NAME		CONNECTOR		DRAWING	M.M.Zhang	DWG.No.	DS-058
PART NO.		母座LD-C01F-A-2P/3P/4P/5P-SMT		CHECK	G.C.Chen	REV.	A1
UNIT : mm	TOLERANCE	UP TO 5	±0.2	APPROVAL	SCALE	DATE	01-07-2016
	OTHERWISE	ABOVE 5 30	±0.3			ANGLE	PAGE
		ABOVE 30	±0.5		2:1		
		ANGLE	±3'				

F

E

D

C

B

A

1

2

3

4