

F

E

D

C

B

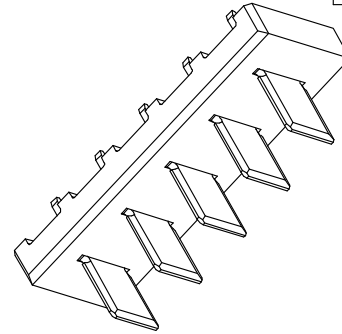
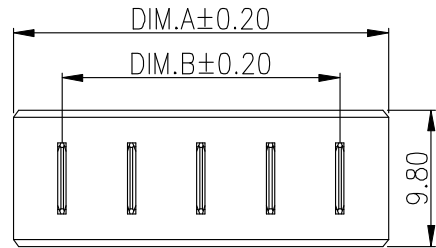
A

RoHS
Compliant

SYMBOL	REVISION	APPROVAL	DATE

1

1



备注:

1. 产品规格:

1-1. 额定电压:30V

1-2. 耐电压:1000V AC MIN.

1-3. 接触阻抗:30mΩ MAX. INITIAL;40mΩ MAX AFTER 3000 CYCLES

1-4. 绝缘电阻:1000MΩ MIN

1-5. 工作温度:-25°C TO +80°C

2. 材质:

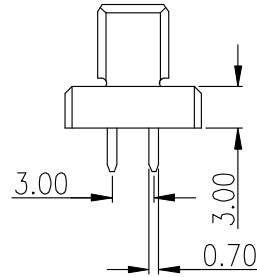
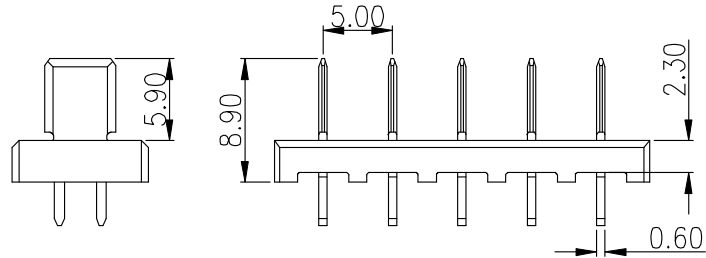
2.1 胶芯: PA9T UL94V-0/LCP BLACK

2.2 端子: 合金铜, 镍底, GOLD

3. 所用材质须符合RoHS要求

2

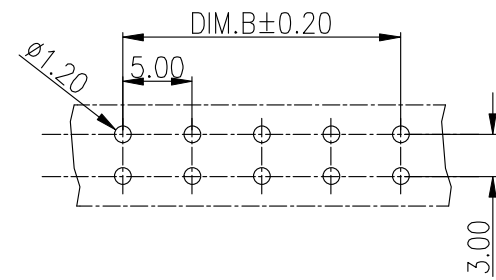
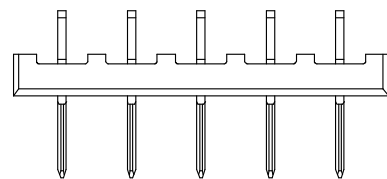
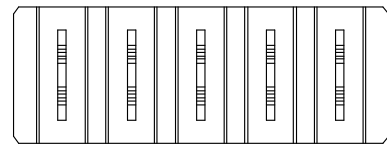
2



PART NUMBER	PIN	Dim.A	Dim.B
公座D-C01M-A-2P-R2	02pin	12.00	5.00
公座D-C01M-A-3P-R2	03pin	17.00	10.00
公座D-C01M-A-4P-R2	04pin	22.00	15.00
公座D-C01M-A-5P-R2	05pin	27.00	20.00

3

3



RECOMMENDED P.C. BOARD LAYOUT

4

4

东莞市朗顿电子科技有限公司

COPYRIGHT RESERVED,PLEASE DO NOT COPY.

PART NAME		CONNECTOR		DRAWING		M.M.Zhang	DWG.No.	DS-057
PART NO.		公座D-C01M-A-2P/3P/4P/5P-R2		CHECK		G.C.Chen	REV.	A1
UNIT : mm	TOLERANCE OTHERWISE	UP TO 5	±0.2	ANGLE	APPROVAL	DATE	01-07-2016	
		ABOVE 5	±0.3				PAGE	
		ABOVE 30	±0.5	0°±3'	SCALE	2:1	1 OF 1	
		ANGLE	±3'					

F

E

D

C

B

A