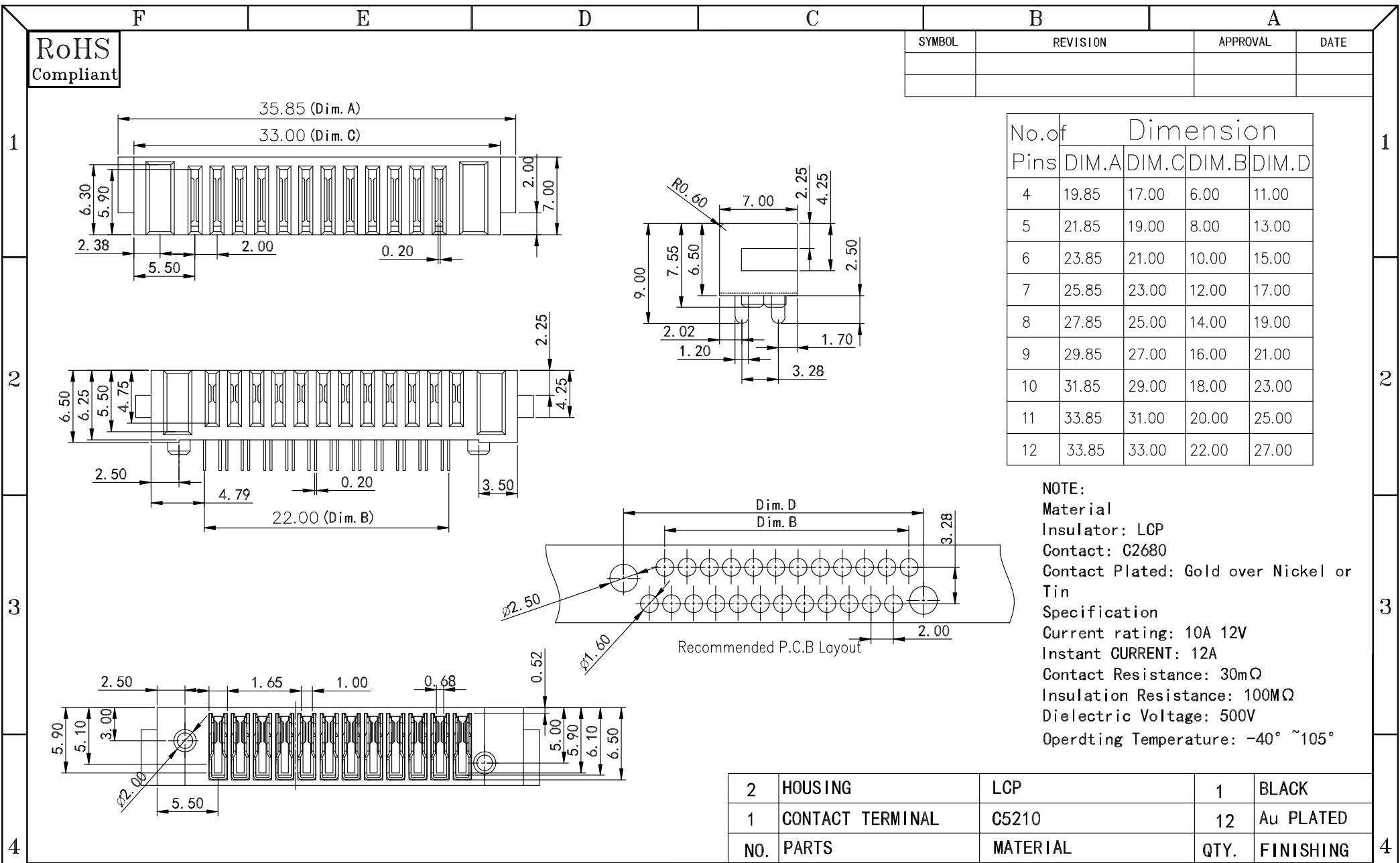


RoHS
Compliant

SYMBOL	REVISION	APPROVAL	DATE

No. of Pins	Dimension			
	DIM.A	DIM.C	DIM.B	DIM.D
4	19.85	17.00	6.00	11.00
5	21.85	19.00	8.00	13.00
6	23.85	21.00	10.00	15.00
7	25.85	23.00	12.00	17.00
8	27.85	25.00	14.00	19.00
9	29.85	27.00	16.00	21.00
10	31.85	29.00	18.00	23.00
11	33.85	31.00	20.00	25.00
12	33.85	33.00	22.00	27.00

NOTE:
 Material
 Insulator: LCP
 Contact: C2680
 Contact Plated: Gold over Nickel or Tin
 Specification
 Current rating: 10A 12V
 Instant CURRENT: 12A
 Contact Resistance: 30mΩ
 Insulation Resistance: 100MΩ
 Dielectric Voltage: 500V
 Operating Temperature: -40° ~105°



2	HOUSING	LCP	1	BLACK
1	CONTACT TERMINAL	C5210	12	Au PLATED
NO.	PARTS	MATERIAL	QTY.	FINISHING

东莞市朗顿电子科技有限公司

COPYRIGHT RESERVED, PLEASE DO NOT COPY.

PART NAME		CONNECTOR		DRAWING	M. M. Zhang	DWG. No.	
PART NO.		母座LD-A05F-A-H1系列		CHECK	G. C. Chen	REV.	A1
UNIT: mm	TOLERANCE	UP TO 5	±0.2	APPROVAL	SCALE	DATE	20-09-2020
	OTHERWISE	ABOVE 5 ~30	±0.3			ANGLE	PAGE
		ABOVE 30	±0.5				
		ANGLE	±3°				