

F

E

D

C

B

A

性能：

额定电流：2.0A

额定电压：12V

耐电压：500V

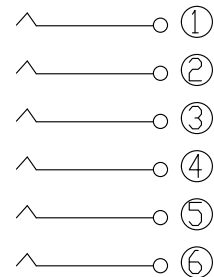
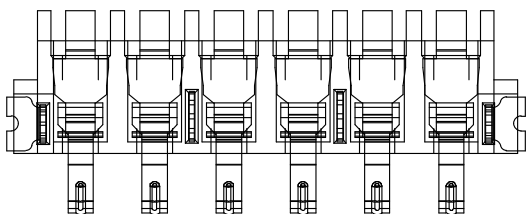
接触电阻：30mΩ

绝缘电阻：500MΩ

工作温度：-40℃~+85℃

塑件(材质)：LCP

接触点(材质)：磷铜，镀金



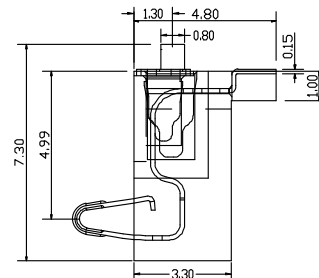
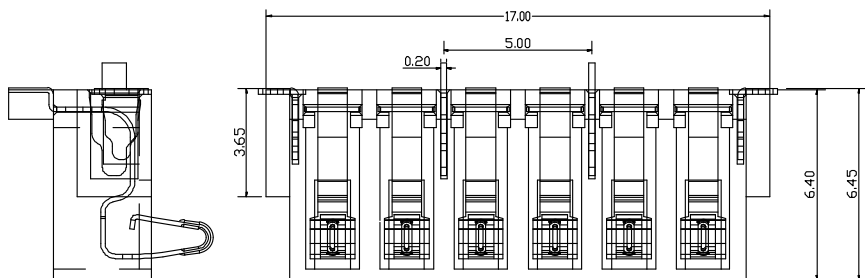
CIRCUIT

1

1

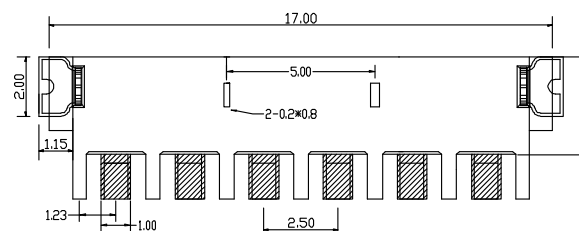
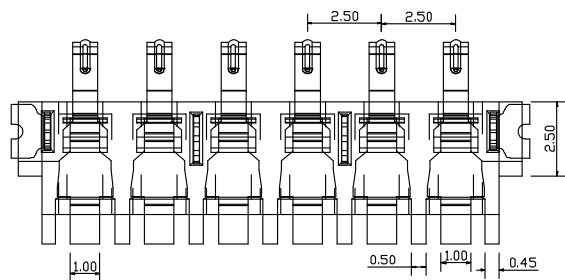
2

2

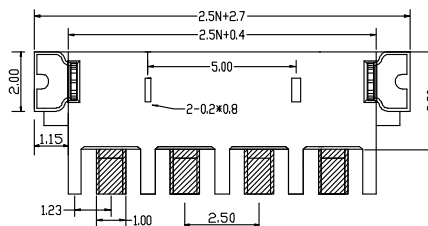


3

3



PCB LAYOUT(6pin)



PCB LAYOUT(4pin)

4

4

2	HOUSING	LCP	1	BLACK
1	CONTACT TERMINAL	BeCu	3	Au PLATED
NO.	PARTS	MATERIAL	QTY.	FINISHING

东莞市朗顿电子科技有限公司

COPYRIGHT RESERVED, PLEASE DO NOT COPY.

PART NAME		CONNECTOR		DRAWING	G.B.Wu	DWG.No.	DS-BC-117
PART NO.		BC-2-409/601		CHECK	Q.L.Dai	REV.	A0
UNIT :	TOLERANCE	UP TO 5	±0.2	APPROVAL	DATE	PAGE	25-04-2017
		ABOVE 5 30	±0.3				
mm	OTHERWISE	ABOVE 30	±0.5	SCALE	2:1	1 OF 1	
		ANGLE	0°±3'				

F

E

D

C

B

A