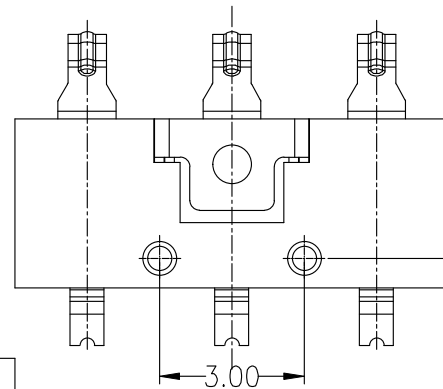


RECOMMENDED PCB LAYOUT  
TOL:(±0.05)



性能:

- 额定电流: 2.0A
- 额定电压: 12V
- 耐电压: 500V
- 接触电阻: 30mΩ
- 绝缘电阻: 500MΩ
- 工作温度: -40℃~+85℃
- 塑件(材质): LCP
- 接触点(材质): 磷铜, 镀金

PART NO.	A	B
BC-2-354	4.60	3.00
BC-2-354A	5.00	3.40
BC-2-354B	5.40	3.80
BC-2-354C	6.00	4.40
BC-2-354D	6.80	5.20
BC-2-354E	7.20	5.60

NO.	PARTS	MATERIAL	QTY.	FINISHING
2	HOUSING	LCP	1	BLACK
1	CONTACT TERMINAL	Phosphor bronze	3	Au PLATED

东莞市朗顿电子科技有限公司

COPYRIGHT RESERVED, PLEASE DO NOT COPY.

PART NAME		CONNECTOR		DRAWING		G.B.Wu		DWG.No.		DS-BC-165	
PART NO.		BC-2-354 354A/354B/354C/354D/354E		CHECK		Q.L.Dai		REV.		A0	
UNIT : mm	TOLERANCE	UP TO 5	±0.2	ANGLE	APPROVAL	DATE		20-10-2017		PAGE	
	OTHERWISE	ABOVE 5 30 ~	±0.3		SCALE	2:1		1 OF 1			