

F

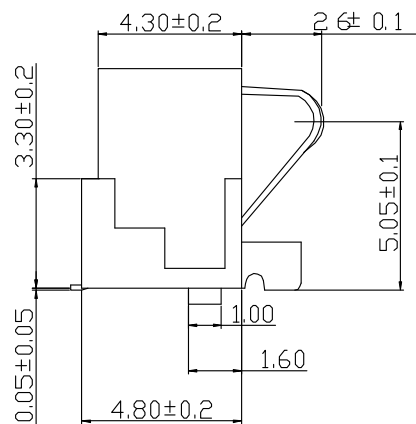
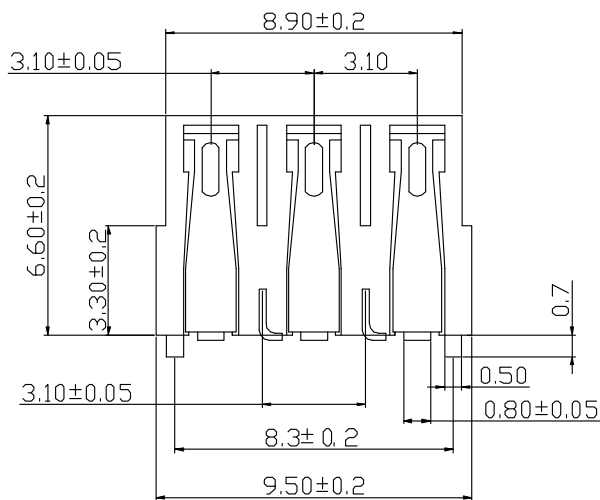
E

D

C

B

A



性能:

额定电流: 0.5A

额定电压: 12V

耐电压: 500V

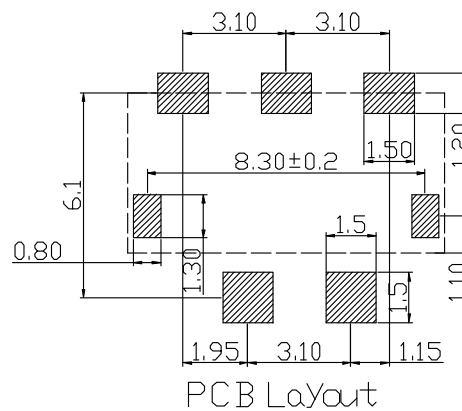
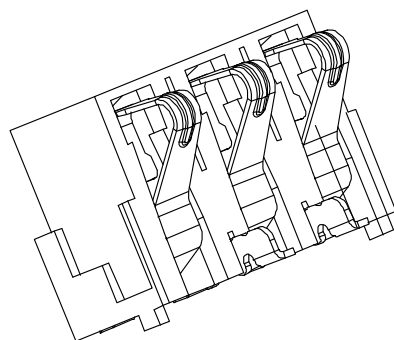
接触电阻: 30mΩ

绝缘电阻: 500MΩ

工作温度: -40℃~+85℃

塑件(材质): LCP

接触点(材质): 磷铜, 镀金



2	HOUSING	LCP	1	BLACK
1	CONTACT TERMINAL	Phosphor bronze	3	Au PLATED
NO.	PARTS	MATERIAL	QTY.	FINISHING

# 东莞市朗顿电子科技有限公司

COPYRIGHT RESERVED, PLEASE DO NOT COPY.

PART NAME		CONNECTOR		DRAWING	G.B.Wu	DWG.No.	DS-BC-158
PART NO.		BC-2-351		CHECK	Q.L.Dai	REV.	A0
	UNIT :	TOLERANCE	UP TO 5	APPROVAL	SCALE	DATE	16-10-2017
	mm	OTHERWISE	ABOVE 5 30 ~			ANGLE	PAGE
			±0.2		2:1		
			±0.3	0°±3'			
			±0.5				
			±3'				

F

E

D

C

B

A