

性能:

额定电流: 3.0A

额定电压: 24V

耐电压: 500V

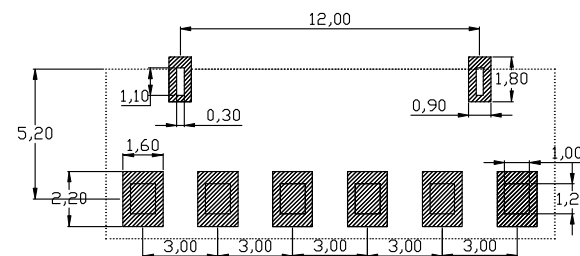
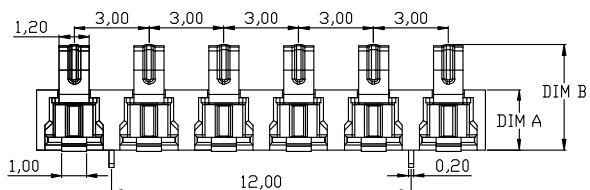
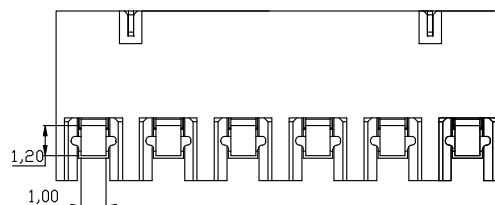
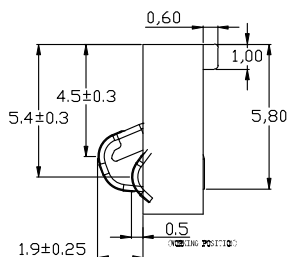
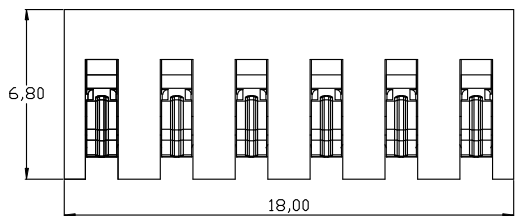
接触电阻: 30mΩ MAX

绝缘电阻: 500MΩ

工作温度: -40℃~+85℃

塑件(材质): LCP, 耐高温260℃

接触点(材质): 铜合金, 触点镀金3U'



RECOMMENDED PCB LAYOUT  
TOP VIEW (.XX±0.05)

PART NO.	DIM A	DIM B	2	HOUSING	LCP	1	BLACK
BC-1-611-C01	2.4	4.30±0.25	1	CONTACT TERMINAL	PHOSPHOR BRONZE	3	Au PLATED
BC-1-611A-C01	3.5	5.40±0.25	NO.	PARTS	MATERIAL	QTY.	FINISHING

东莞市朗顿电子科技有限公司

COPYRIGHT RESERVED, PLEASE DO NOT COPY.

PART NAME		CONNECTOR		DRAWING		G.B.Wu		DWG.No.		DS-BC-111	
PART NO.		BC-1-611/611A-C01		CHECK		Q.L.Dai		REV.		A0	
UNIT : mm	TOLERANCE OTHERWISE	UP TO 5	±0.2	ANGLE	APPROVAL	DATE	PAGE	06-09-2017		1 OF 1	
		ABOVE 5 30 ~	±0.3					0°±3'		2:1	
		ABOVE 30	±0.5	SCALE		2:1		PAGE		1 OF 1	
		ANGLE	±3'								