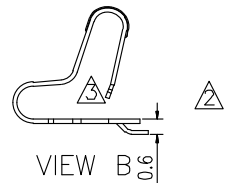
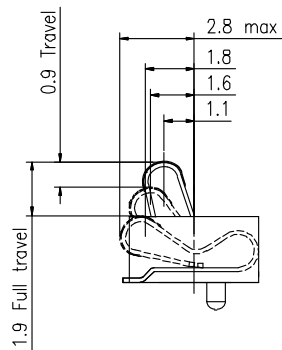


F E D C B A

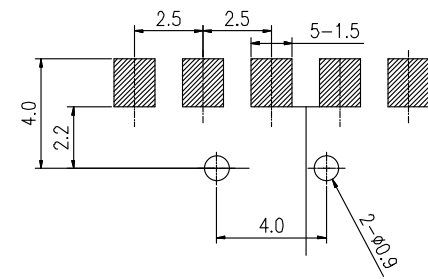
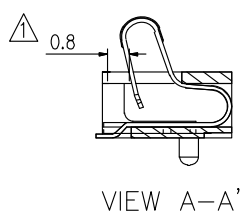
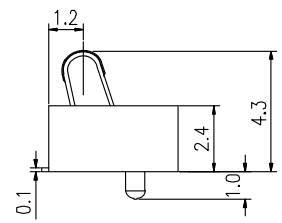
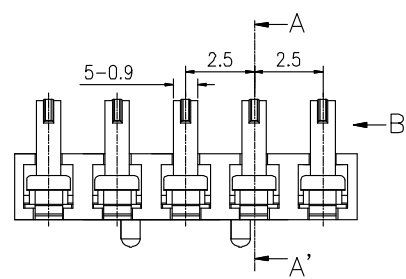
1



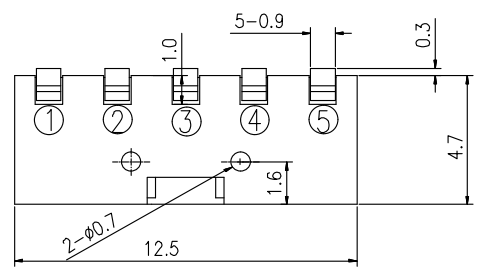
性能:

额定电流: 2.0A
 额定电压: 12V
 耐电压: 500V
 接触电阻: 30mΩ
 绝缘电阻: 500MΩ
 工作温度: -40℃~+85℃
 塑件(材质): LCP
 接触点(材质): 铜镀金

2



3



4

2	HOUSING	LCP	1	BLACK
1	CONTACT TERMINAL	BeCu	3	Au PLATED
NO.	PARTS	MATERIAL	QTY.	FINISHING

东莞市朗顿电子科技有限公司

COPYRIGHT RESERVED, PLEASE DO NOT COPY.

PART NAME		CONNECTOR		DRAWING		G.B.Wu		DWG.No.		DS-BC-053	
PART NO.		BC-1-501		CHECK		Q.L.Dai		REV.		A0	
UNIT	: mm	TOLERANCE	UP TO 5	±0.2	ANGLE	APPROVAL	DATE	20-05-2017		20-05-2017	
			ABOVE 5 30 ~	±0.3							
		OTHERWISE	ABOVE 30	±0.5	0°±3'	SCALE	2:1	PAGE	1 OF 1		

F E D C B A