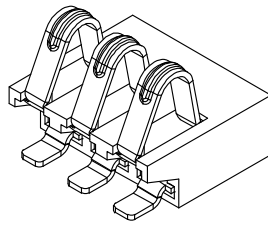
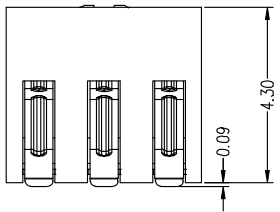
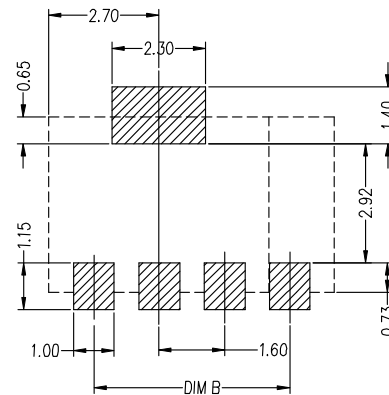
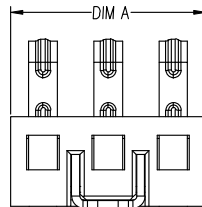
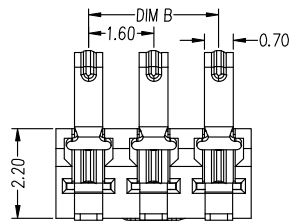


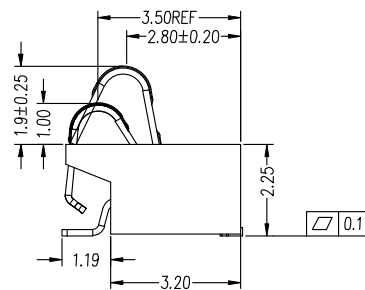
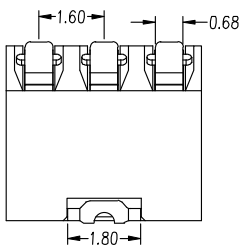
F E D C B A



- NOTES-
- 1.Electrical:  
Contact resistance: 50m ohms max.  
Dielectric withstanding voltage: 250V RMS.  
Insulation resistance: 1000M ohms min.
  - 2.Mechanical:  
MATE AND UNMATE FORCE:  
MATE FORCE: 2.5kg MAX  
UNMATE FORCE: 0.5kg MIN  
Durability: 3000cycles MIN.
  - 3.Environment:  
Operating Temperature: -55°to+105°
  - 4.FINISH:  
TERMINAL: GOLD Plated ALL Over NICKEL.
  - 5.MATERIAL:  
5.1.Housing: HI-TEMP Plastic,UL94V-0,black;  
5.2. Terminal: Cobby alloy,T=0.15mm  
5.3 Stator: Brass T=0.20mm



3&4PIN LAYOUT  
RECOMMENDED PCB LAYOUT  
TOL:(±0.05)



Pin(N)	BE FILED	DIMA	DIMB	DIMC
3Pin	BC-1-334	4.80	3.20	0
4Pin	BC-1-425	6.40	4.80	0

NO.	PARTS	MATERIAL	QTY.	FINISHING
2	HOUSING	LCP	1	BLACK
1	CONTACT TERMINAL	PHOSPHOR BRONZE	3	Au PLATED

东莞市朗顿电子科技有限公司

COPYRIGHT RESERVED,PLEASE DO NOT COPY.

PART NAME		CONNECTOR		DRAWING	G.B.Wu	DWG.No.	DS-BC-231
PART NO.		BC-1-334 425		CHECK	Q.L..Dai	REV.	A0
UNIT :	TOLERANCE	UP TO 5	±0.2	ANGLE	APPROVAL	DATE	15-04-2018
mm	OTHERWISE	ABOVE 5 30	±0.3	0°±3'	SCALE	PAGE	1 OF 1
		ABOVE 30	±0.5				
		ANGLE	±3'				

F E D C B A