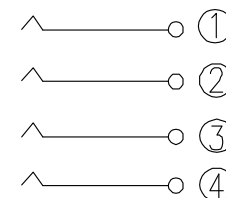
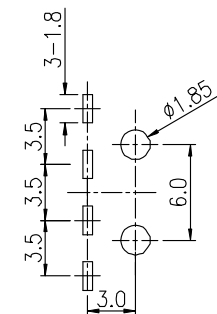
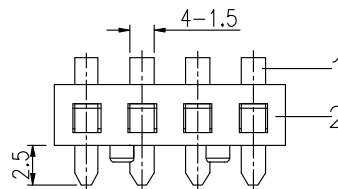
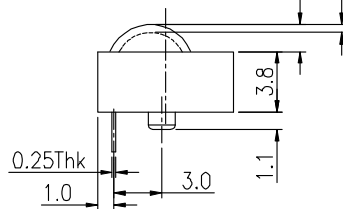
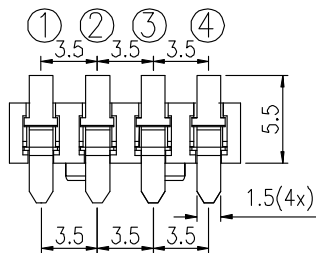
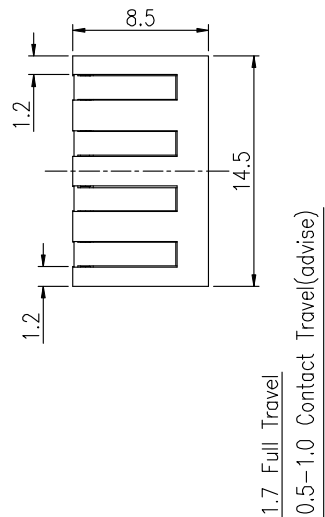
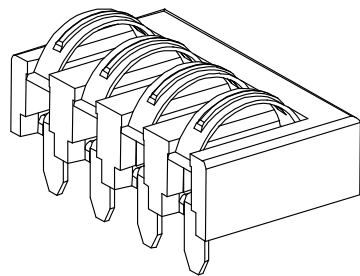


RoHS  
Compliant

SYMBOL	REVISION	APPROVAL	DATE

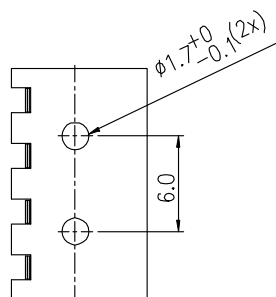
### SPECIFICATIONS

- ELECTRICAL CHARACTERISTICS:
  - 1-1.RATING: DC 12V 3A
  - 1-2.CONTACT RESISTANCE: 20m Ω MAX(INITAL)
  - 1-3.DIELECTRIC WITHSTANDING VOLTAGE: 500V AC FOR ONE MINUTE
  - 1-4.INSULATION RESISTANCE: 100M Ω MIN, MEASURED BY 500V DC
- FORCE:0.6mm CONTACT TRAVEL:400gf Max.
- LIFE TEST:MECHANICAL LIFE TEST 20,000 CYCLES.
- TEMPERATURE RISE : 30°C MAX



P.C.B LAYOUT

CIRCUIT



2	HOUSING	PPA	1	BLACK
1	CONTACT TERMINAL	C70350	2	Au PLATED
NO.	PARTS	MATERIAL	QTY.	FINISHING

东莞市朗顿电子科技有限公司

COPYRIGHT RESERVED,PLEASE DO NOT COPY.

PART NAME		CONNECTOR		DRAWING	G.C.Chen	DWG.No.	SBICL5
PART NO.		BC-1-422		CHECK	G.C.Chen	REV.	A0
UNIT :	TOLERANCE OTHERWISE	UP TO 5	±0.2	ANGLE	APPROVAL	DATE	08-01-2016
		ABOVE 5 30	±0.3			SCALE	PAGE
mm		ABOVE 30	±0.5	0°±3'	2:1		