

F E D C B A

1

2

3

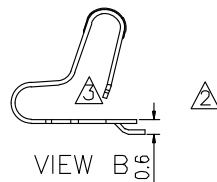
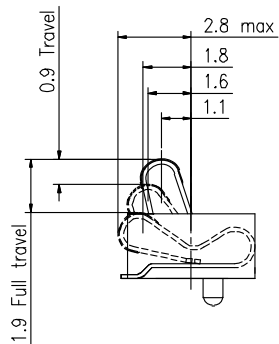
4

1

2

3

4



性能:

额定电流: 2.0A

额定电压: 12V

耐电压: 500V

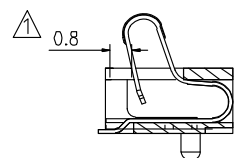
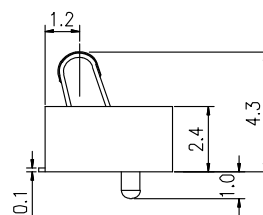
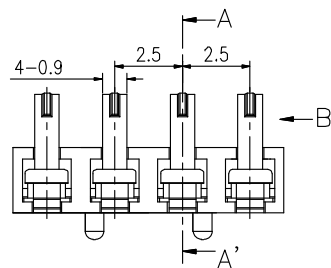
接触电阻: 30mΩ

绝缘电阻: 500MΩ

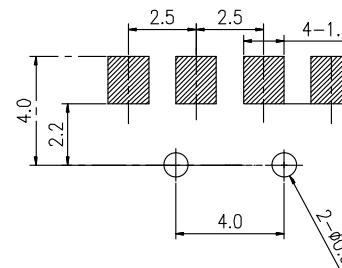
工作温度: -40℃~+85℃

塑件(材质): LCP

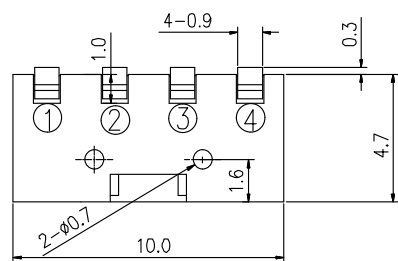
接触点(材质): 铜镀金



VIEW A-A'



P.C.B LAYOUT



2	HOUSING	LCP	1	BLACK
1	CONTACT TERMINAL	BeCu	3	Au PLATED
NO.	PARTS	MATERIAL	QTY.	FINISHING

东莞市朗顿电子科技有限公司

COPYRIGHT RESERVED, PLEASE DO NOT COPY.

PART NAME		CONNECTOR		DRAWING	G.B.Wu	DWG.No.	DS-BC-052
PART NO.		BC-1-409		CHECK	Q.L.Dai	REV.	A0
UNIT : mm	TOLERANCE OTHERWISE	UP TO 5	±0.2	ANGLE	APPROVAL	DATE	20-05-2017
		ABOVE 5 30 ~	±0.3			PAGE	1 OF 1
		ABOVE 30	±0.5	SCALE	2:1		
		ANGLE	±3'				

F E D C B A