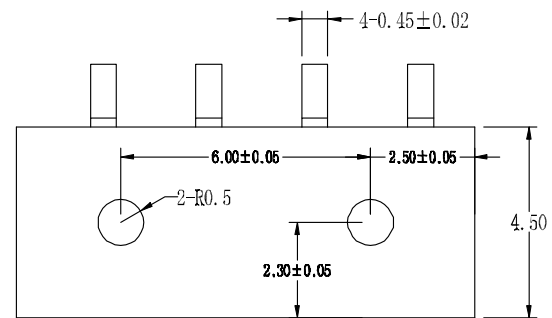
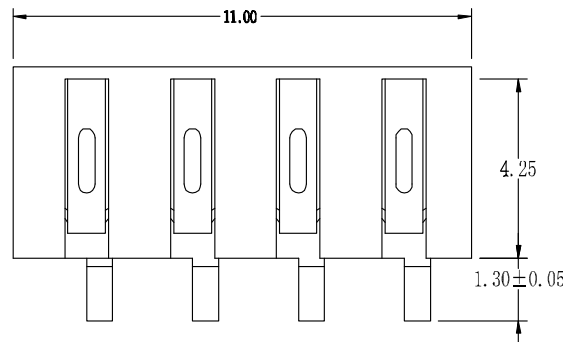


F E D C B A

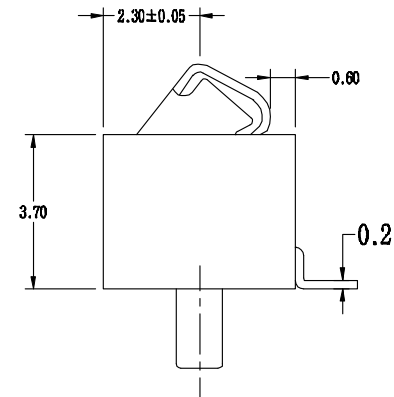
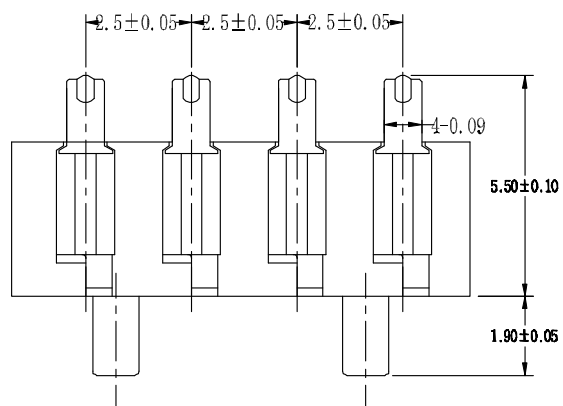
1



性能:

- 额定电流: 2.0A
- 额定电压: 12V
- 耐电压: 500V
- 接触电阻: 30mΩ
- 绝缘电阻: 500MΩ
- 工作温度: -40℃~+85℃
- 塑件(材质): LCP 黑色
- 接触点(材质): 铜合金, 镀金

2



3

4

2	HOUSING	LCP	1	BLACK
1	CONTACT TERMINAL	BeCu	3	Au PLATED
NO.	PARTS	MATERIAL	QTY.	FINISHING

东莞市朗顿电子科技有限公司

COPYRIGHT RESERVED, PLEASE DO NOT COPY.

PART NAME		CONNECTOR		DRAWING	W.M.Zhang	DWG.No.	DS-BC-004
PART NO.		BC-1-401		CHECK	Q.L.Dai	REV.	A0
UNIT :	TOLERANCE	UP TO 5	±0.2	ANGLE	APPROVAL	DATE	22-08-2006
		ABOVE 5 TO 30	±0.3				
mm	OTHERWISE	ABOVE 30	±0.5	SCALE	2:1	PAGE	1 OF 1

F E D C B A