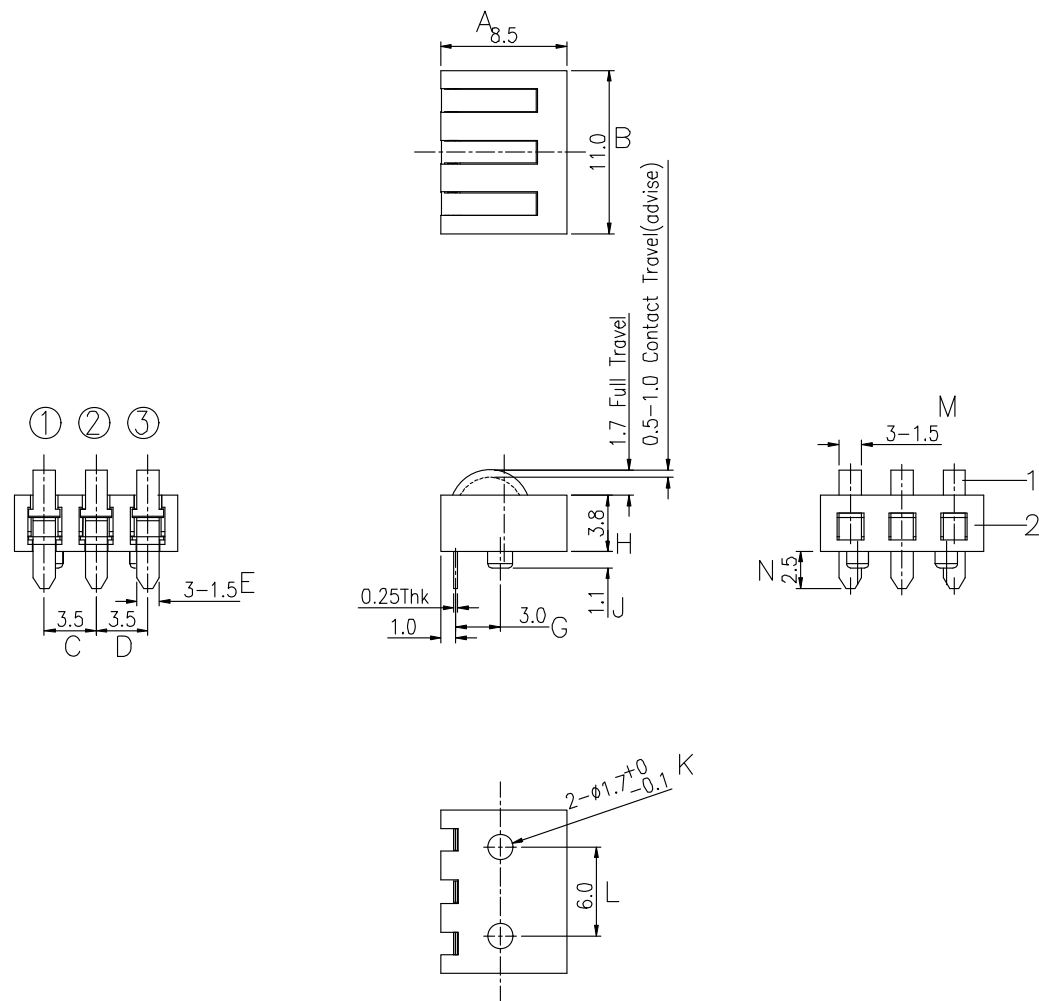


RoHS
Compliant

SYMBOL	REVISION	APPROVAL	DATE

SPECIFICATIONS

- ELECTRICAL CHARACTERISTICS:
 - 1-1.RATING: DC 12V 3A
 - 1-2.CONTACT RESISTANCE: 20mΩ MAX(INITAL)
 - 1-3.DIELECTRIC WITHSTANDING VOLTAGE: 500V AC FOR ONE MINUTE
 - 1-4.INSULATION RESISTANCE: 100MΩ MIN, MEASURED BY 500V DC
- FORCE:0.6mm CONTACT TRAVEL:600gf Max.^P
- LIFE TEST:MECHANICAL LIFE TEST 20,000 CYCLES.
- TEMPERATURE RISE : 30°C MAX



P.C.B LAYOUT

CIRCUIT

2	HOUSING	PPA	1	BLACK
1	CONTACT TERMINAL	C1720R	3	Au PLATED
NO.	PARTS	MATERIAL	QTY.	FINISHING

东莞市朗顿电子科技有限公司

COPYRIGHT RESERVED,PLEASE DO NOT COPY

PART NAME		CONNECTOR		DRAWING	G.C.Chen	DWG.No.	SBICL5
PART NO.		BC-1-330		CHECK	G.C.Chen	REV.	A0
UNIT :	TOLERANCE	UP TO 5	±0.2	ANGLE	APPROVAL	DATE	08-01-2016
	OTHERWISE	ABOVE 5~30	±0.3				
mm		ABOVE 30	±0.5	SCALE	2:1	PAGE	1 OF 1
		ANGLE	±3°				