

F

E

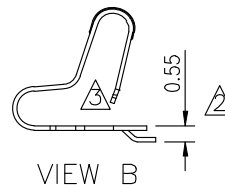
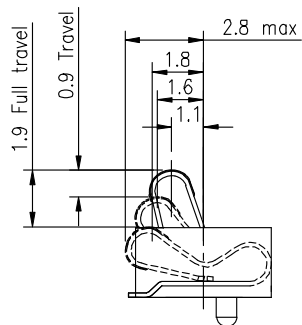
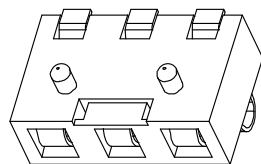
D

C

B

A

1



性能:

额定电流: 2.0A

额定电压: 12V

耐电压: 500V

接触电阻: 30mΩ

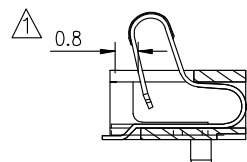
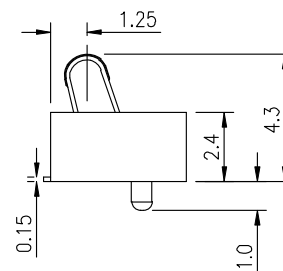
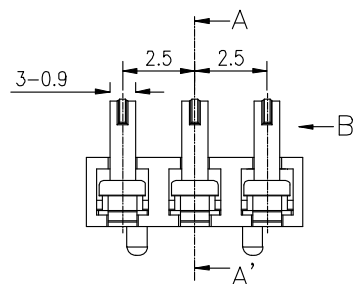
绝缘电阻: 500MΩ

工作温度: -40℃~+85℃

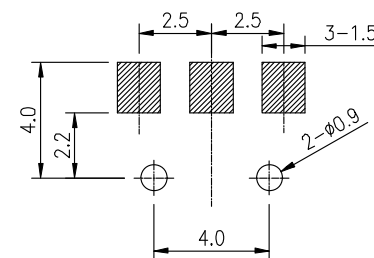
塑件(材质): LCP 黑色

接触点(材质): 铜镀金

2

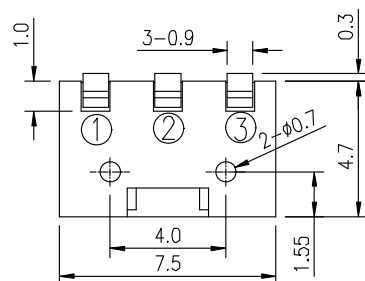


VIEW A-A'



P.C.B LAYOUT

3



2	HOUSING	LCP	1	BLACK
1	CONTACT TERMINAL	BeCu	3	Au PLATED
NO.	PARTS	MATERIAL	QTY.	FINISHING

4

东莞市朗顿电子科技有限公司

PART NAME		CONNECTOR		DRAWING	G.B.Wu	DWG.No.	DS-BC-051
PART NO.		BC-1-314		CHECK	Q.L.Dai	REV.	A0
UNIT	: mm	TOLERANCE	UP TO 5	±0.2	APPROVAL	DATE	20-05-2017
		OTHERWISE	ABOVE 5 30 ~	±0.3		SCALE	2:1
			ABOVE 30	±0.5			
			ANGLE	±3°			

COPYRIGHT RESERVED, PLEASE DO NOT COPY.

F

E

D

C

B

A